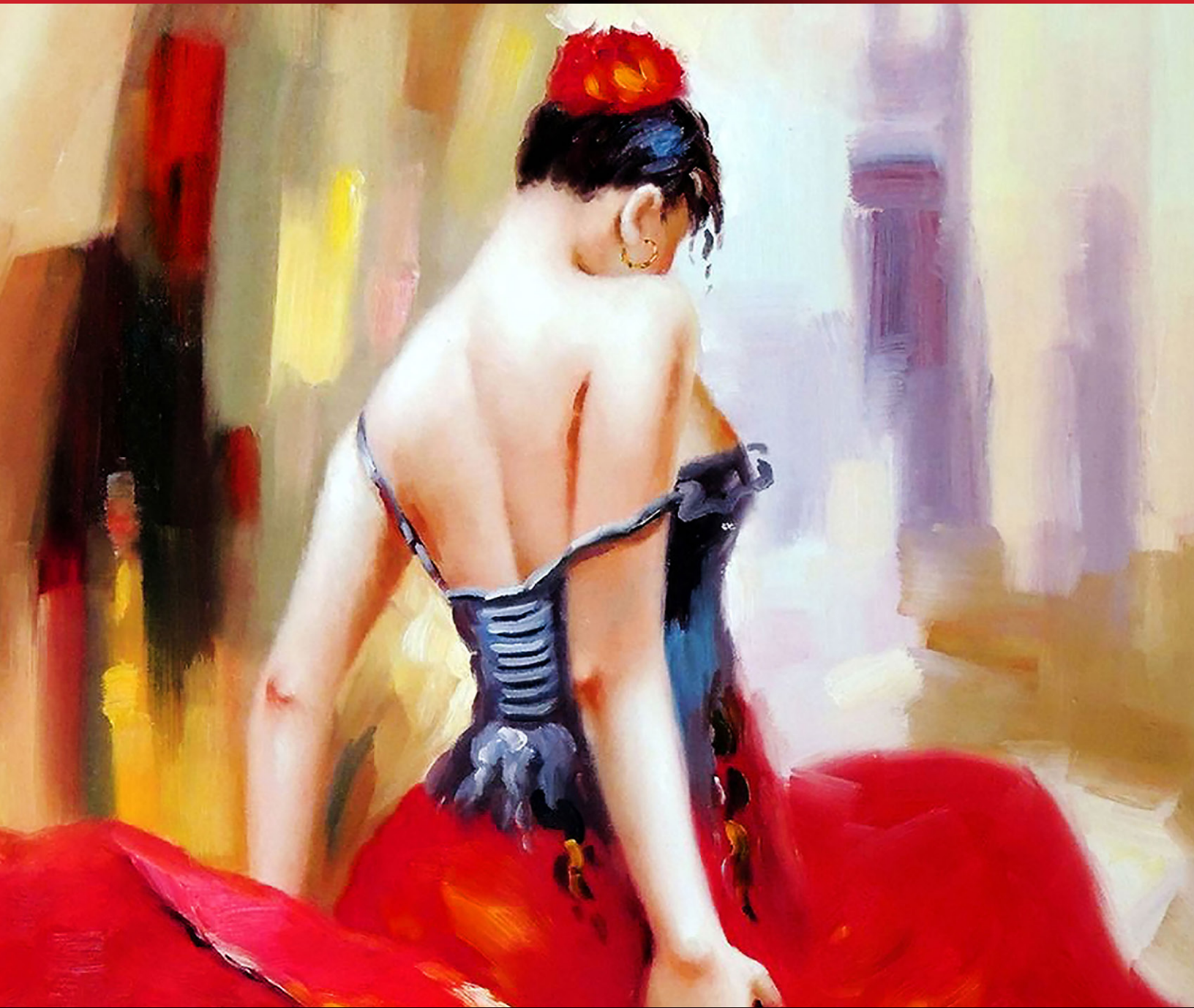


SOLVENT/ECO-SOLVENT/UV/LATEX PRINTING



RITMO 353SJ

- Weight: 10 oz / 338 gsm
- Thickness: 14.5 mil / 368 microns
- Composition: 35% cotton, 65% polyester
- Weave Construction: 1:1
- Finish: Semi-Matte / Natural White
- Texture: Lightweight



Applications: High Volume Art Reproductions, Photography, High-end POP / Décor
Roll Widths: 30" - 60" (76.2cm - 1.83m)

FREDRIX
CANVAS

FREDRIXPRINTCANVAS.COM

PRODUCT SPECIFICATION SHEET INKJET PRINTING CANVASES

Style:	353SJ
Name:	Ritmo
Item Master:	126XX
Canvas Construction:	65% poly / 35% cotton
Weave:	1 x 1
Coatings:	One Acrylic/Latex Primer Basecoat, Latex & Solvent Inkjet Printable Topcoat
Appearance:	Natural White
Texture:	Lightweight
Finish Weight (oz):	10
(gsm):	338
Thickness (mils):	14.5
(microns):	368
Whiteness:	85
Brightness:	87
L:	95.5
a:	0.5
b:	1.5
Gloss 60°:	4.3

This canvas is designed for digital printing applications using solvent based ink sets. Although designed for all printers using these ink sets, actual results may vary depending on printer model, age, print design, environmental conditions, and other factors. Exposure of a print to atmospheric pollutants, or to temperature, humidity, and / or lighting extremes can result in fading, color shifting, or other visual changes. The ideal conditions for printing and storage are a temperature of 70°F ±5°F and relative humidity of 50% RH ±3% RH. The shelf life is 1 year at recommended temperature and humidity.

Tara Materials guarantees only the canvas itself against defects in quality or workmanship. No other warranty is expressed or implied.



INQUIRIES:

Phone: 1-800-241-8129

Ext. 175 (USA) or

+1-770-963-5256

Ext. 160 (INTL)

Fax: 1-800-882-TARA (8272) or

+1-770-963-1044 (INTL)

General Inquiries:

rluepke@taramaterials.com

International Inquiries:

mmorel@taramaterials.com

SOCIAL:

Facebook: @FredrixPrint

[facebook.com/fredrixprint](https://www.facebook.com/fredrixprint)

Instagram: @FredrixPrintCanvas

[instagram.com/fredrixprintcanvas](https://www.instagram.com/fredrixprintcanvas)

[fredrixprintcanvas](https://www.instagram.com/fredrixprintcanvas)

LinkedIn: @Fredrix-Print-Canvas

[linkedin.com/company](https://www.linkedin.com/company/fredrix-print-canvas)

[/fredrix-print-canvas](https://www.linkedin.com/company/fredrix-print-canvas)